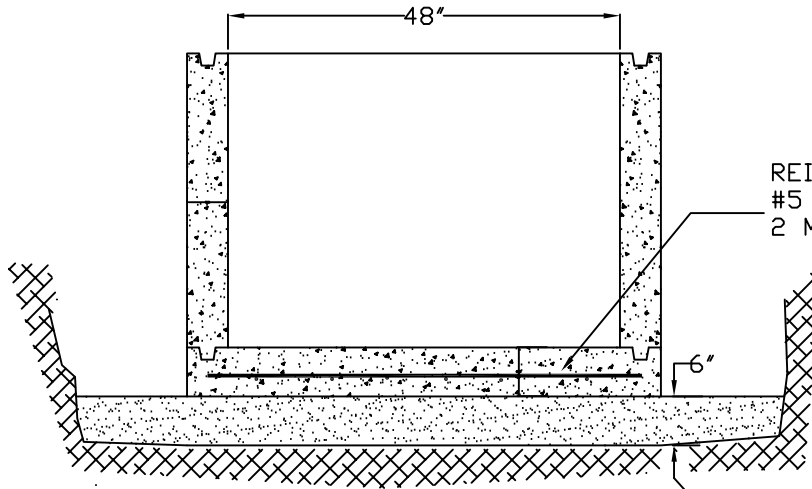


NOTE:  
 CONCRETE TO EXTEND 12"  
 OUTSIDE OF MH WALL AND  
 6" ABOVE THE BOTTOM OF  
 THE BASE SECTION

POURED IN PLACE MANHOLE BASE



REINFORCING SHALL BE  
 #5 @ 12" O.C. E.W. OR  
 2 MATS OF 6 X 6 X 10 GA.

CRUSHED ROCK BASE

PRECAST MANHOLE BASE



TITLE: <b>PRECAST MANHOLE BASE</b>		SHEET: <b>11 OF 18</b>
FILE NAME: <b>SAN-011</b>	DRAWN BY: <b>WDK</b>	REV. DATE: <b>10/5/94</b>
SCALE: <b>NOT TO SCALE</b>	DATE: <b>06/19/2001</b>	CHECKED BY: <b>RHH</b>