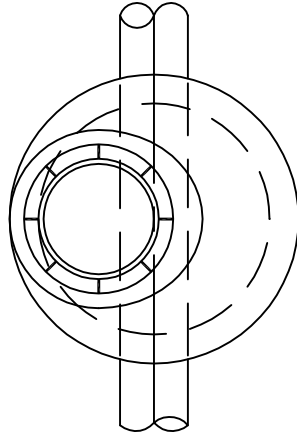
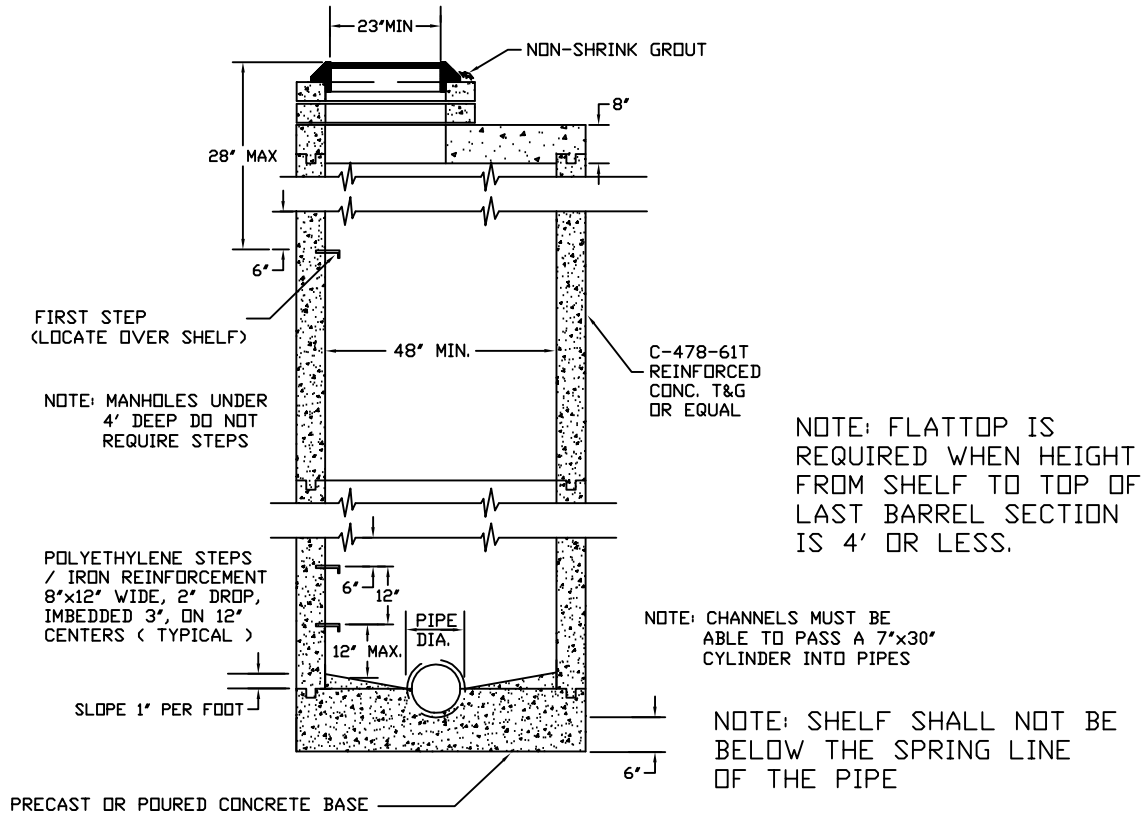


PROVIDE STD. RUBBER RING JOINT WITHIN 1' - 6" OF OUTSIDE FACE OF MANHOLE WALL



NOTE: MANHOLE LID TO BE 6" ABOVE FINISH GRADE IN EASMENTS  
BARREL SECTION IS 3'

NOTE: REQUIRE CONCENTRIC LID WHEN HEIGHT FROM SHELF TO TOP OF LAST BARREL SECTION IS 3' OR LESS.



TYPICAL FLATTOP MANHOLE  
6" TO 21" PIPE



TITLE: <b>TYP. FLATTOP MANHOLE</b>		SHEET: <b>8 OF 18</b>
FILE NAME: <b>SAN-008</b>	DRAWN BY: <b>WDK</b>	REV. DATE: <b>10/5/94</b>
SCALE: <b>NOT TO SCALE</b>	DATE: <b>06/19/2001</b>	CHECKED BY: <b>RHH</b>